

First steps with your ATS product

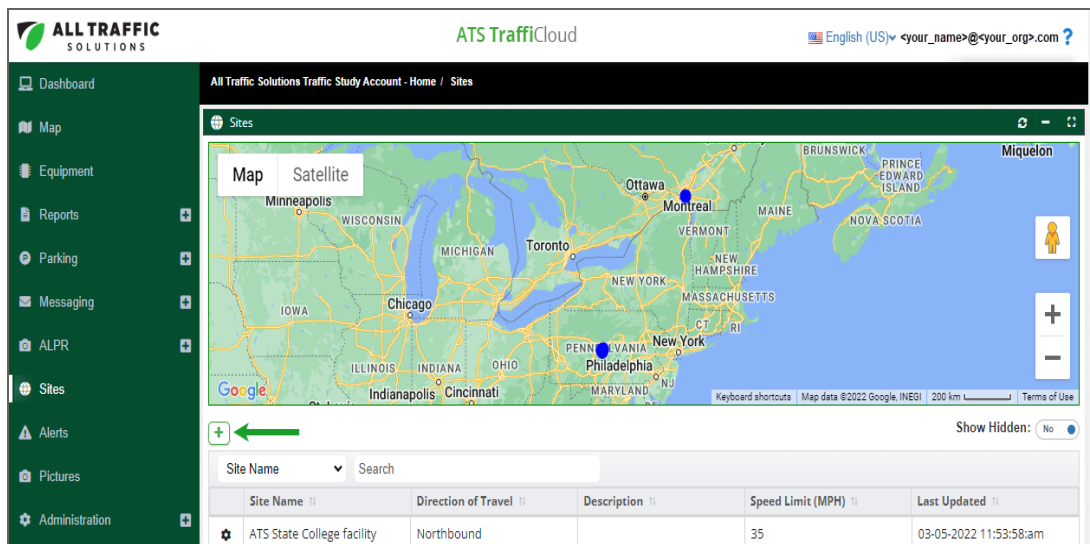



Here's a quick overview of what to do to get your ATS product up and running, from starting out through to generating traffic reports.

1. Create a Site for your ATS product

After you receive your TraffiCloud login credentials, create a Site for your ATS product. If you have a TraffiCloud subscription, just sign in and go the Sites page, as shown. If you don't have a subscription, you can still run reports on collected traffic data on the website and manage your device with Android Mobile or TraffiCloud Sign Manager for Windows. For details about TraffiCloud access, refer to the *TraffiCloud Start-Up Instructions* included with your product.

» On the TraffiCloud navigation menu, click **Sites** and then click the **Plus** sign  under the map.



After your initial training, for detailed instructions log in to TraffiCloud and click the TraffiCloud **Help** menu , where you can access the TraffiCloud **Training Videos** and **Getting Started Guides**.

2. Once you receive your ATS product

- Once you receive your ATS product, take it to the roadside and install it. Use the included *Quick Start Guide* for all your setup instructions.
- Then, in TraffiCloud assign the Site to your product. Refer to the *Getting Started with TraffiCloud Guide* for your product.

3. Configure the ATS product in TraffiCloud

Configure the ATS product as needed. Configure speed limits and display, schedules, and configure TraffiCloud to send you and your team alerts about excessive speeding, tampering, and battery levels. Refer to the *Getting Started with TraffiCloud Guide* for your product.

4. Run reports

You can start generating reports after the first data upload (three hours), but we recommend running them with at least a full day of data. Any TraffiCloud user can run the standard traffic reports, but without a subscription the data must be transferred from the sign to the Mobile app or Sign Manager and then uploaded to the TraffiCloud Website. With a TraffiCloud subscription, the device uploads the data to the Website automatically, and you can also run premium reports, such as Compliance & Risk or Enforcement Priorities.