



STATTRAK BIDIRECTIONAL SPEED AND VOLUME TRAFFIC COUNTER

StatTrak Counter and Classifier

- Front fire, tracking Doppler radar unit
- Non-intrusive side of road or median data collection
- Speed and Volume measurements on per vehicle basis for up to four lanes with vehicle counts by direction
- Basic classification – small, medium and large (factory preset)
- Very low power, 0.15 Watts
- Self-contained, no other cabinets needed
- **Dimensions:** 6.8" x 4.8" x 5.3" D (172.8mm x 121.9mm x 134.6mm)
- **Weight:** 3 lbs (1.4 kg)
- Works in all weather and light conditions
- FCC certified and CE listed
- Communication
 - Built in Bluetooth (Class 1, long range – up to 1000')
 - Data and power cable with USB and charger connections
 - RS232 interface (optional - replaces USB and Bluetooth)
- Windows application to analyze vehicle count data from local collection with detailed reports
- Android app for setup with current readings
- Protective carrying case (optional)
- GPS (optional)

Installation Parameters

- **Four Lanes Maximum:** Two from side of road (same direction or approach and recede) and four from median (two on either side of median, approach and recede). Counts per direction
- Simple installation. No calibration, no measurements, no trigonometric computations are required on the road
- **Mount Height:** 7–12 feet
- Measures lanes up to 36' from center of unit
- Weatherproof security switch for turning unit on and off, NEMA 4X polycarbonate enclosure, weatherproof connectors
- Audible beep to indicate passing vehicles during setup facilitates high-confidence deployment
- **Operating Temp:**
 - Electronics: –40C to 60C
 - LFP battery: –20C to 60C

Radar

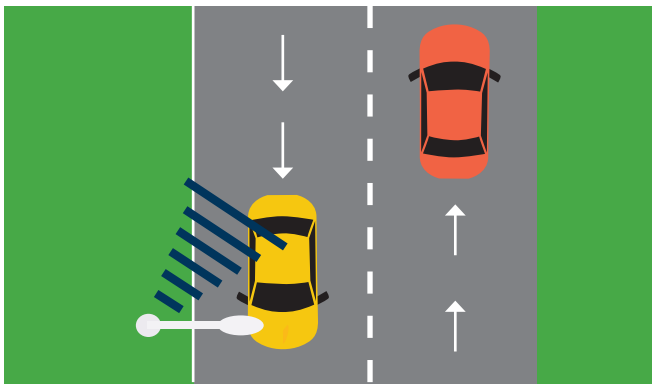
- 5mW maximum
- 24.020-24.230 GHz (K Band)
- Beam angle: 20° x 60°

Performance

- **Volume Accuracy Typical:**
 - 90% in two lanes
 - 97% single lane
 - Data Analysis

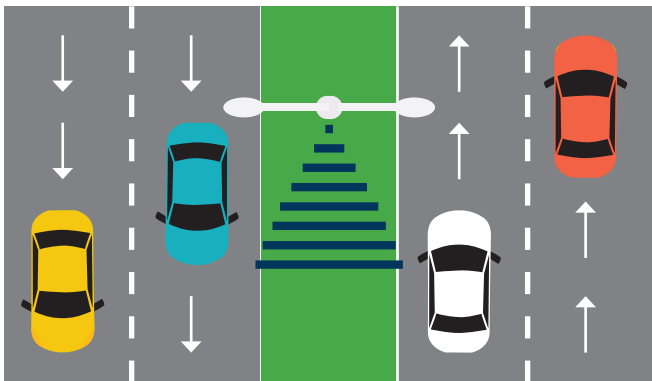
BIDIRECTIONAL

One incoming/one outgoing lane with unit mounted on the side



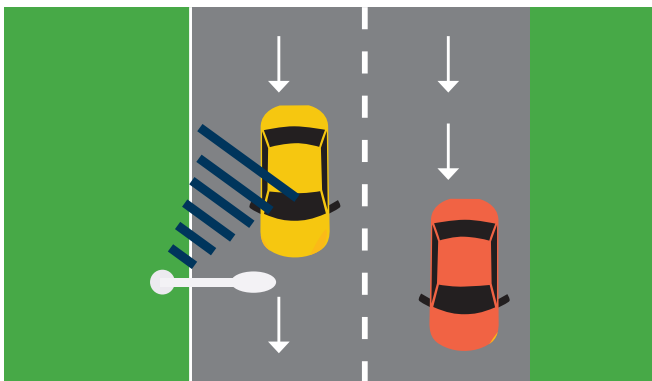
BIDIRECTIONAL

Two incoming/two outgoing lanes with unit mounted in a median



UNI-DIRECTIONAL

Two incoming lanes with unit mounted on the side



Traffic Speed, Volume and Classification Reports

- Local download through Android or PC
- TraffiCloud Web-based Management Services
 - Automatic remote data collection
 - Turnkey, hosted system
 - Variety of reports available
 - Alerts for high speed, congestion and power status
 - Map view with locations of all equipment
 - SDK available for API
 - Includes modem and cellular service

Data Storage

- Data available real time, also stored in device memory
- Onboard storage for 315,000 vehicles

Power

- **Input:** 12VDC, 0.15W
- Internal LFP (LiFePO4, 66Wh) battery provides operation for up to 7 days for temporary installations
- AC Charger, 2A LFP charger for 3.5 hour recharge time
- Internal MPPT solar charger controller for optimal solar charging (optional)
- 5W solar panel (optional)

Take a demo of TraffiCloud®, our secure, web-based traffic management and reporting software that makes it easy to manage your traffic devices and data remotely!

Call 866.366.6602 or email sales@alltrafficsolutions.com