

ALL TRAFFIC SOLUTIONS



Pocket ATS for PDA with Windows Mobile

All Traffic Solutions 3100 Research Drive State College, Pennsylvania 16801
www.alltrafficsolutions.com support@alltrafficsolutions.com 814-237-9005

Pocket ATS for PDA with Windows Mobile

1 PDA Quick Starts

1.1	PDA Introduction	4
1.2	PDA Functions for All Units	5
1.3	PDA Speed Display Functions - Shield or Speed Sentry	6
1.4	PDA Message Sign Functions - instALERT and SpeedAlert	8
1.5	Quick Start - Create a message with PDA (Pre 2010 and Factory Recertified)	11

PDA Quick Starts

PDA Introduction

All units can be controlled locally with optional Bluetooth management and a wireless PDA

To begin, turn on the PDA and the sign. Open the Pocket ATS Program on the PDA.

Connect to a Sign

The first screen is the connection screen. Click the *Search for Signs* button in the lower right corner to find all signs within range of the PDA. Once the list of available signs is populated select the sign to connect to and click *Connect*. Once you connect you will see the home screen with the available main functions for the connected sign.



Home Screen

The home screen on the PDA has all the functionality available for all ATS equipment. Only the functions applicable to the unit to which you are connected will be available. The PDA screen is touch sensitive, so all functions can be activated with your fingertip or with the stylus.



PDA Functions for All Units

Power

To configure settings that affect power usage, touch the *Power* button. The *Power Settings* screen shows the power level of your power supply whether battery or AC. It also provides settings that affect the power usage of the sign. To save power, schedule the sign to turn it off when the display is not necessary, blink the speed display and reduce the radar sensitivity to have the speed display pick up vehicles only when they are within sight range of the sign. Also adjust the brightness range for the sign, either locking it to one brightness level or adjusting the minimum and maximum brightness between which the unit's automatic dimming will operate. Reducing the maximum brightness to 7 can make a significant reduction in power usage.



Config

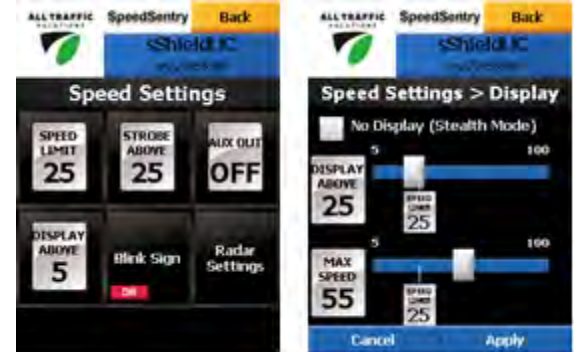
The device configuration screen is used to configure settings applicable to the connected sign . Rename the sign, set the clock on the sign and get diagnostic information from the sign.



PDA Speed Display Functions - Shield or Speedsentry

Speeds

To set parameters associated with the speed limit, touch the *Speeds* button. This will take you to the *Speed Settings* screen. Set the speed limit by clicking the *Speed Limit* button. This brings up the *Speed Limit* screen. Set the speed limit with the slider. *Display Above* button brings up the *Display Settings* where you set whether the display is on or off (Stealth mode where data can still be collected,) the speed above which speeds will be displayed and the maximum speed displayed. Above the maximum speed displayed the screen will go dark so that no one will race the sign.



Data

To set parameters associated with the Data recording functions, touch the *Data* button. All units with the Traffic Data Collection option are collecting data anytime the unit is on. With Remote Traffic Data Management, you *Move* the sign when you move among locations so the data uploaded to the server is identified with the correct location. If you are not using the service, you should upload the data when you move the unit from one location to another. If you forget, ATS Assist allows you to split a data file into two files based upon a data and time so the data file is for one location.

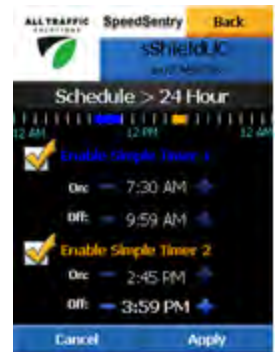


Click on the *Download* button to download data to the PDA. Once downloaded you can tell the PDA to erase the data file on the speed display. The *Download* button indicates how full the memory is. The *Recent Stats* shows the last 20 seconds of readings and will update continuously when you are connected to a sign.

See the Data Management and Reports Section for detailed instructions on data and reporting.

Scheduling

To configure a schedule for a unit, touch the *Schedule* button. In this screen, you can set a schedule for units over a 24 Hour period. Click the *Enable* check box to enable each desired time window for the sign to be on. For older signs there are two available time windows. For newer signs there are six available time windows. The sign will be on during the time windows with its currently configured settings.



Time Sync

For the schedule to display correctly the time in the unit must be correct. The time must also be correct to collect accurate traffic data.

To check the speed display's time, from the main menu on the PDA click the *Configuration* button followed by the *Clock* button. Check that the time on the PDA is correct and make any *Change* if necessary. Then click *Sync* which will set the time on the speed display.

PDA Message Sign Functions - instALERT and SpeedAlert

Create and Display a Message

To create messages and manage messages on the instALERT, touch the *Messages* button.

To create a new message, touch the *Create Messages* button. Once in the screen, you can select up to a 3 screen message by using the + icons, or you can remove screens using the icon.

Within each screen, select the type of message you want 3 lines, 2 lines, 1 line, mixed lines, graphics, Your Speed, Speed Limit or stopwatch. Type the desired text into the text boxes. Set the duration and blinkrate for each screen with the sliders. You can justify the text with the justification icons.

Once you have completed the first screen, tap on screens 2 and 3 if applicable and create these screens in the same manner.

Once you have completed the message, save it with the *Save* button. You can preview the message with the *Preview* button.

From the preview screen, you can send the message to the message sign with the *Display Now on Sign* button.



Viewing Messages in PDA or instALERT

To view the messages on the PDA or on the sign, tap the *Message List* button. This screen will display all the messages on the PDA. If you then *Read from Sign*, the messages that are on the instALERT will be indicated in the list with checks in the check boxes. You can uncheck some or all messages and check other messages up to the maximum of 24, and then *Send to Sign*. Then these messages are available on the sign using the scroll button. They can also be scrolled from the PDA using the *Now Showing* button.



Speed Dependent Messages

To create dependent messages, click the *Dependent Messages* button. In this screen, apply messages created and saved on the message creation screen to the speed conditions for approaching vehicles. Select one message for each speed condition. Modify the speed ranges with the + and - bordering the range limits. Once the dependent message group is created, *Save* it. *Preview* the message, stepping through the messages as they will be displayed for each speed condition that is indicated below the screens. Tap *Back* to modify the messages or *Send to Sign*. The



messages will be available in the sign to display when the sign is in [Dependent Message mode](#) and it receives speed inputs from a speed display or internal radar.

Scheduling Options

The message sign can be scheduled for one message on or off over a 24 hour period, to change messages up to 6 times over a 24 hour period, or to have a different 24 hour schedules applied to each of 7 days. Select *Schedule* and select the desired schedule type.

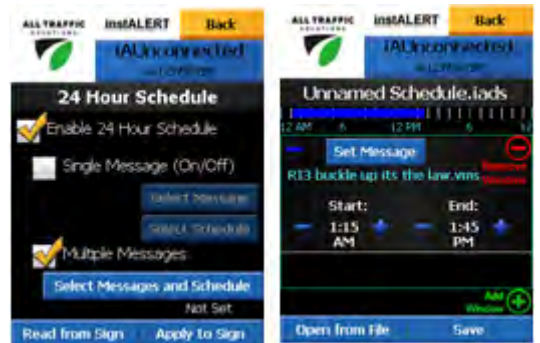
instALERT with Radar Speed Settings

If the sign has the optional radar installed, see the section on [PDA Speed Display Functions](#) to set the speed related settings.

One Day Schedule

For a one day schedule, check *Enable 24 Hour Schedule*. This schedule will repeat each 24 hour period. For only one message turned on and off, check *Single Message on/off*. Select the message with the *Select Message* button. Select the schedule with the *Select Schedule* button. In the schedule window select an on and off time for each window added, up to 6 windows in a day. The sign will be off whenever there is no message scheduled.

For multiple messages throughout a day, check the *Multiple Messages* box and then tap *Select Messages and Schedule*. This brings up the schedule page where you enter the time on, time off and message for each time window. *Save* the schedule on this screen and return to the 24 Hour Schedule screen. Then click *Apply to Sign* to load and activate the schedule.



7 Day Schedule

To create a 7 day schedule, tap the *7 day* button. In the 7 day schedule screen, *Select* a saved 24 hour schedule as created in the previous section to each day of the week. The same 24 hour schedule can be used on multiple days or use a different 24 hour schedule on each day. Days can also be left blank and the sign will be off.



Time Sync

For the schedule to display correctly the time in the unit must be correct. The time must also be correct to collect accurate traffic data if the unit has the optional radar.

To check the time on an instALERT, start the unit and on the third start up screen the sign will display the current set time and date. If it is not correct, from the main menu on the PDA click the *Configuration* button followed by the *Clock* button. Check that the time on the PDA is correct and make any *Change* if necessary. Then click *Sync* which will set the time on the instALERT.

Quick Start - Create a message with PDA (Pre 2010 and Factory Recertified)

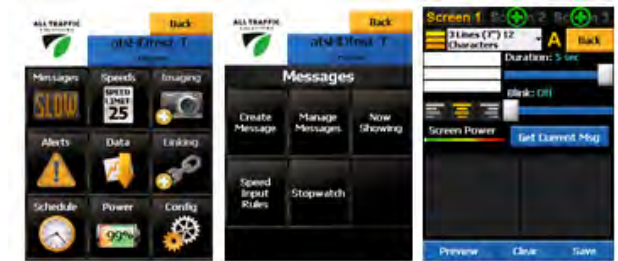
Open Pocket ATS and connect to the instALERT

Turn on PDA and start Pocket ATS from the Start Menu. When the units within range display, tap on the *Unit* and tap *Connect*.



Tap Messages

Then tap *Create Message*, opening the Message creation screen



Select number of screens in the message

Pick the number of Screens using the *plus signs* on the Screen tabs. You can also *Get Current Message* from the instALERT and edit this message.



Pick the screen layout with the layout dropdown

Pick 1, 2 or 3 lines of text, combinations, graphics or specialty screens.



Select display settings

Pick screen *Duration* and *Blink* style. Duration can be from 1-5 seconds and can be set differently for each screen. Blinking the screen saves power and extends battery life.



Preview message and send to message sign

Tap *Preview* to see the message on the PDA. Tap *Display Now* on Sign to display the message on the instALERT. The sign must be in *Single Message* mode for the message to display.

