

**ALL TRAFFIC**  
SOLUTIONS



Connected Solutions for  
Better Traffic Safety Outcomes

# **SPEED, VOLUME AND ENFORCEMENT REPORTS**



[AllTrafficSolutions.com](http://AllTrafficSolutions.com)

# All Your Traffic Safety Program Data In One Place

TraffiCloud reports provide fast access to real-time traffic data and analytics to help you calm traffic, improve traffic safety and meet your traffic management objectives.

- Prioritize enforcement resources
- Demonstrate need for funding and on grant applications
- Reduce manual data collection and file management
- Clear complaints and improve community relations

## EXTENDED SPEED SUMMARY REPORT

Traffic volume and speeds at a specific site. Speeds by hour and totals for the time range selected.

**ALL TRAFFIC SOLUTIONS**



*A sign of the future.™*

### Extended Speed Summary Report

Generated by Marketing Demo from All Traffic Solutions Traffic Study Account on Aug 31, 20-- at 2:57:24 PM

Site: Beside Mt Nittany United Methodist Church, NB

Time of Day: 0:00 to 23:59

Dates: 8/24/20-- to 8/30/20--

#### Overall Summary

Total Days of Data: 7

Speed Limit: 35

Average Speed: 31.05

50th Percentile Speed: 30.50

85th Percentile Speed: 35.86

Pace Speed Range: 26 to 36

Minimum Speed: 5

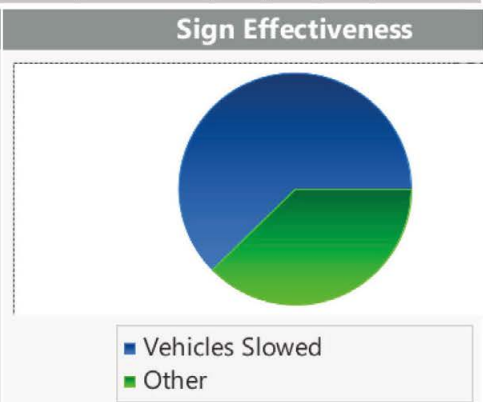
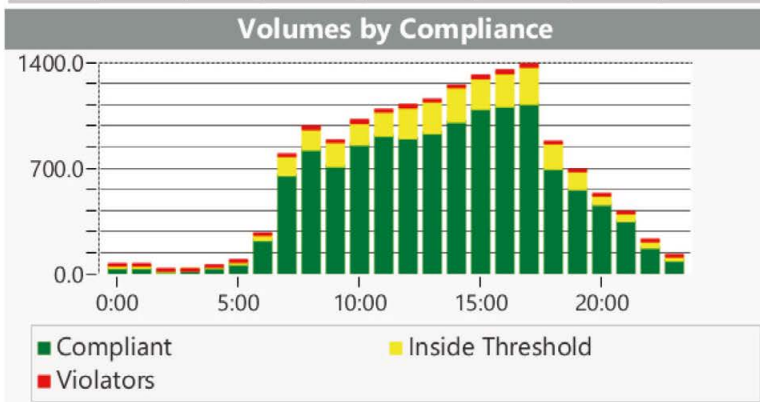
Maximum Speed: 57

Display Status: Displayed Vehicle Speeds

Average Volume per Day: 2235.0

Total Volume: 15645

Hours	Sign Mode	Speed Limit	Total # Vehicles	Total # Violations	% Violations	Avg # Vehicles	Avg # Violations	Minimum Speed Recorded	Maximum Speed Recorded	Avg Spd	50% Spd	85% Spd	Sign Effectiveness
0:00	Speed	35	54.0	1.0	1.9 %	6.8	0.1	9.0	47.0	31.0	29.3	35.0	59.5 %
1:00	Speed	35	52.0	1.0	1.9 %	8.7	0.2	22.0	46.0	32.0	30.4	34.4	70.4 %
2:00	Speed	35	25.0	2.0	8.0 %	3.6	0.3	26.0	46.0	36.7	35.6	39.7	63.7 %
3:00	Speed	35	20.0	0.0	0.0 %	3.3	0.0	18.0	44.0	30.8	29.3	34.5	65.0 %
4:00	Speed	35	51.0	2.0	3.9 %	8.5	0.3	18.0	50.0	32.2	30.5	35.6	68.8 %



### VOLUMES BY COMPLIANCE

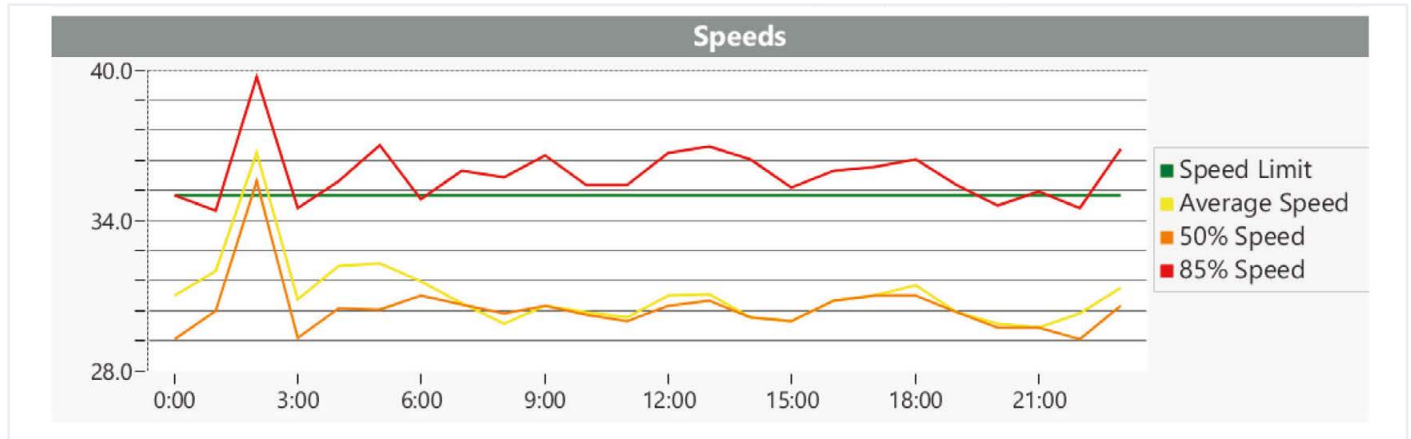
Traffic volume by compliance level by user-established threshold.

### SIGN EFFECTIVENESS

Traffic sign effectiveness by percentage of vehicles slowed down.


## SPEED LIMIT VS. AVERAGE SPEED

Actual speeds relative to the Speed Limit – 85%, 50% and Average. The 85th percentile speed is the speed under which 85% of the traffic is traveling.



## TRAFFICLOUD ENFORCEMENT PRIORITIES REPORT

Prioritizes sites, times of the day and day of the week for the most effective enforcement activity. Priorities by the 85% speed or a weighted analysis skewed towards either speed or volume.



**ALL TRAFFIC SOLUTIONS**

*A sign of the future.™*

### Enforcement Priorities Report

Generated by Marketing Demo from All Traffic Solutions Traffic Study Account on Aug 31, 20-- at 1:36:38 PM

Speed Bins: Size 0, Range 1 to 100

Rank Results By 85% Speed

Site: Beside Mt Nittany United Methodist Church, NB

Time of Day: 0:00 to 23:59

Dates: 8/24/20-- to 8/30/20--

Violation Threshold: Speed Limit + 10

#	Site	Day of Week	Time	Speed Limit	Average Speed	Average Violator Speed	85% Speed	Average # Vehicles	Average # Violators
1	Beside Mt Nittany United Methodist	Saturday	12:00 - 13:00	35	32.0	47.0	40.0	124.0	4.0
2	Beside Mt Nittany United Methodist	Tuesday	5:00 - 6:00	35	32.0	0.0	39.0	20.0	0.0
3	Beside Mt Nittany United Methodist	Saturday	13:00 - 14:00	35	33.5	51.0	38.5	112.0	1.0
4	Beside Mt Nittany United Methodist	Sunday	17:00 - 18:00	35	31.0	0.0	38.0	150.0	0.0
5	Beside Mt Nittany United Methodist	Monday	6:00 - 7:00	35	33.0	0.0	38.0	42.0	0.0
6	Beside Mt Nittany United Methodist	Monday	23:00 - 24:00	35	33.0	49.0	38.0	20.0	1.0
7	Beside Mt Nittany United Methodist	Tuesday	23:00 - 24:00	35	32.0	48.0	38.0	26.0	1.0
8	Beside Mt Nittany United Methodist	Wednesday	14:00 - 15:00	35	31.0	48.0	38.0	258.0	1.0
9	Beside Mt Nittany United Methodist	Wednesday	21:00 - 22:00	35	32.0	47.0	38.0	81.0	3.0
10	Beside Mt Nittany United Methodist	Thursday	8:00 - 9:00	35	31.0	46.0	38.0	141.0	3.0
11	Beside Mt Nittany United Methodist	Thursday	9:00 - 10:00	35	32.0	48.0	38.0	117.0	2.0
12	Beside Mt Nittany United Methodist	Thursday	18:00 - 19:00	35	33.0	0.0	38.0	82.0	0.0

## COMPLIANCE AND RISK REPORT

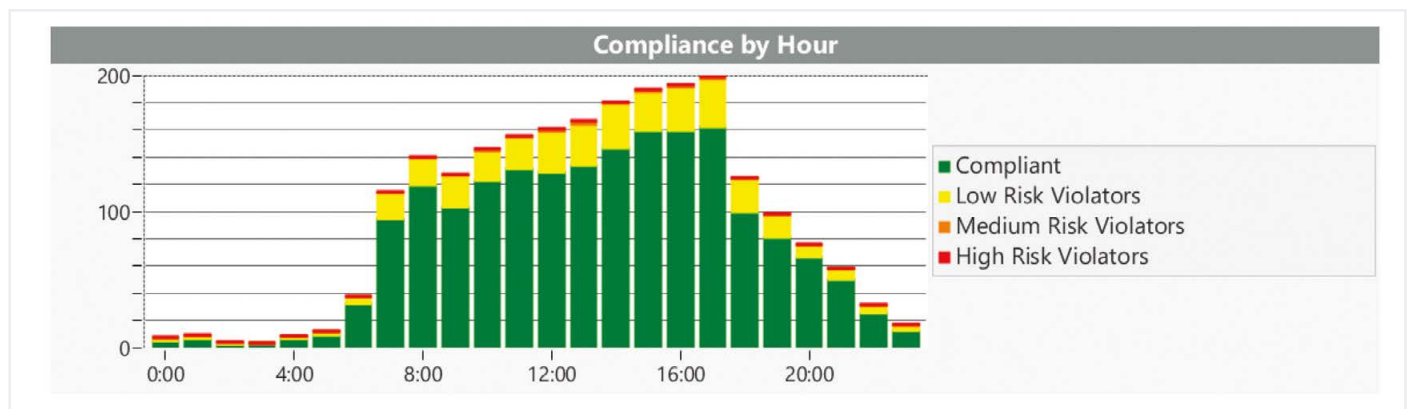
Volume of traffic in each compliance range by hour, day or week. Set thresholds for medium and high risk speeds to visualize compliance levels at a site.



## COMPLIANCE BY HOUR

Compliance by volume is most telling when traffic volume varies significantly over the time range, such as when viewing hourly compliance and the night and day volumes are significantly different.

At night a higher percentage of vehicles are non-compliant, but the volume is very low and and just a few cars can raise the percentage of non-compliance.



# SPEED EFFECTIVENESS REPORT



*A sign of the future.™*

## Speed Effectiveness Report

Generated by Marketing Demo from All Traffic Solutions Traffic Study Account  
on Aug 31, 20-- at 1:20:16 PM

Speed Bins: Size 0, Range 21 to 100

Time View: By Day of Week (Avg Volumes)

Site: Beside Mt Nittany United Methodist  
Church, NB

Time of Day: 0:00 to 23:59

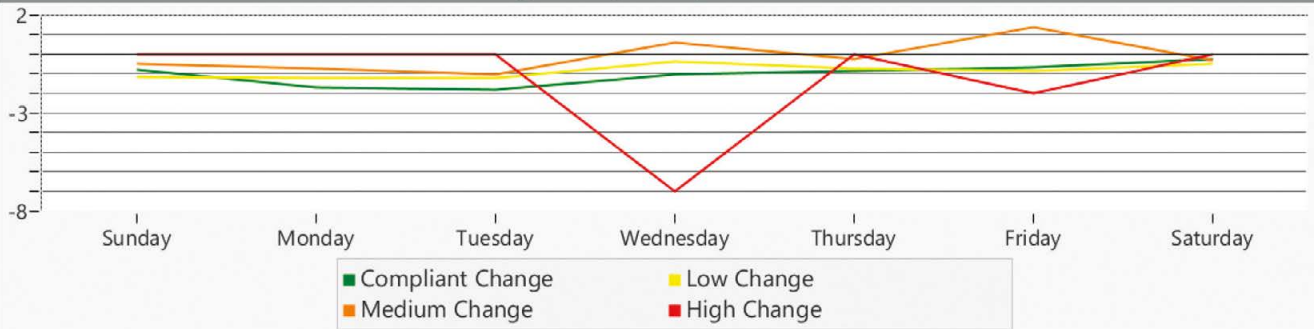
Dates: 8/23/20-- to 8/29/20--

Medium Risk Threshold: Speed Limit + 10

High Risk Threshold: Speed Limit + 20

Date/Time Range	Spd Limit	Sign Mode	Compliant Average Final Speed	Compliant Change In Speed	Low Risk Average Final Speed	Low Risk Change In Speed	Medium Risk Average Final Speed	Medium Risk Change In	High Risk Average Final Speed	High Risk Change In Speed	% of Vehicles Slowed by
Sunday	35	Speed Display	29.4	-0.8	38.4	-1.1	47.9	-0.5	0.0	0.0	63.3 %
Monday	35	Speed Display	29.5	-1.7	38.4	-1.2	48.4	-0.8	0.0	0.0	67.7 %
Tuesday	35	Speed Display	29.0	-1.8	38.7	-1.2	47.5	-1.0	0.0	0.0	66.2 %
Wednes	35	Speed Display	29.8	-1.0	38.4	-0.4	49.7	0.6	56.0	-7.0	58.7 %
Thursda	35	Speed Display	29.7	-0.9	38.6	-0.7	47.6	-0.3	0.0	0.0	56.0 %
Friday	35	Speed Display	29.6	-0.7	38.5	-0.9	47.9	1.4	57.0	-2.0	55.6 %
Saturda	35	Speed Display	29.9	-0.3	38.6	-0.5	48.1	-0.3	0.0	0.0	56.5 %

Changes in Speed by Risk Threshold



# VOLUME BY SPEED REPORT



## Volume By Speed Report

Generated by Marketing Demo from All Traffic Solutions Traffic Study Account on Aug 31, 20-- at 1:44:14 PM

Speed Bins: Size 5, Range 1 to 100

Time of Day: 0:00 to 23:59

Time View: By Day of Week (Avg Volumes)

Dates: 8/24/20-- to 8/30/20--

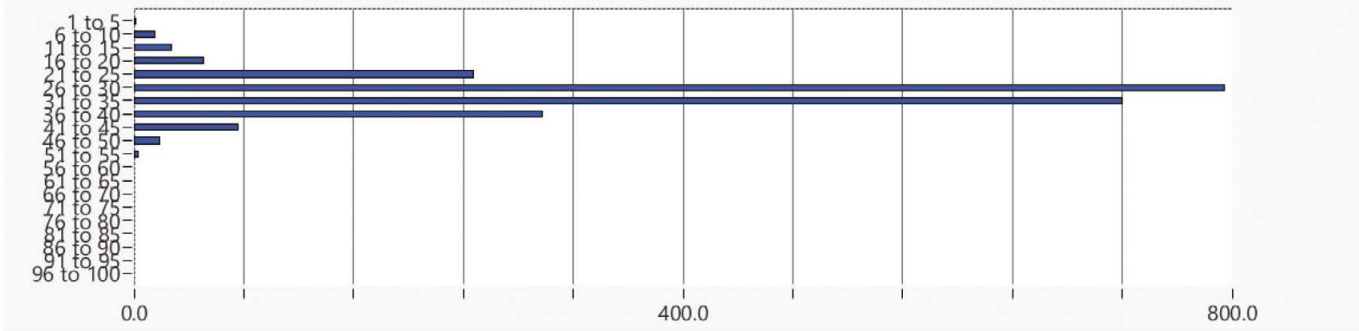
Site: Beside Mt Nittany United Methodist

Church, NB

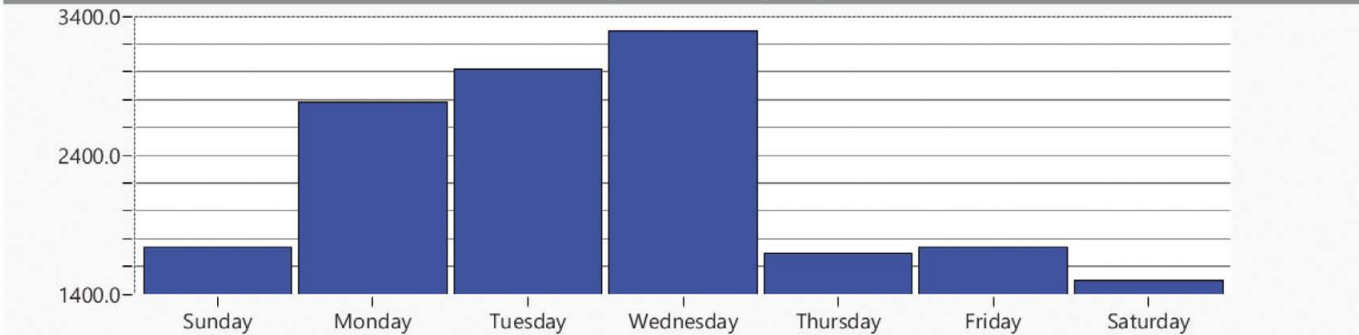
*A sign of the future.™*

Day of Week	Spd Limit	1 to 5	6 to 10	11 to 15	16 to 20	21 to 25	26 to 30	31 to 35	36 to 40	41 to 45	46 to 50	51 to 55	56 to 60	61 to 65	66 to 70	71 to 75	76 to 80	81 to 85	86 to 90	91 to 95	96 to 100	Avg Spd	Avg Num Vehicles	
Sunday	35	0	11	33	80	216	537	555	219	62	20	1	0	0	0	0	0	0	0	0	0	0	30.7	1734
Monday	35	1	29	29	45	280	986	921	376	86	22	5	0	0	0	0	0	0	0	0	0	0	31.1	2780
Tuesday	35	0	19	36	79	416	1155	864	333	96	20	1	0	0	0	0	0	0	0	0	0	0	30.9	3019
Wednesday	35	2	27	38	47	374	1184	1057	431	105	24	3	0	0	0	0	0	0	0	0	0	0	31.1	3292
Thursday	35	0	7	20	37	134	618	561	229	70	14	2	0	0	0	0	0	0	0	0	0	0	31.2	1692
Friday	35	2	4	14	41	180	621	557	239	60	19	3	1	0	0	0	0	0	0	0	0	0	30.5	1741
Saturday	35	5	8	16	30	131	460	527	249	55	13	3	0	0	0	0	0	0	0	0	0	0	31.5	1497
Avg #		1	15	27	51	247	794	720	297	76	19	3	0	0	0	0	0	0	0	0	0	31	2251	

Average Vehicles by Speed Bin



Average Volume by Day



# VOLUME BY TIME REPORT

**ALL TRAFFIC SOLUTIONS**



*A sign of the future.™*

## Volume By Time Report

Generated by Marketing Demo from All Traffic Solutions Traffic Study Account

on Sep 6, 20-- at 12:22:57 PM

Speed Bins: Size 0, Range 1 to 100

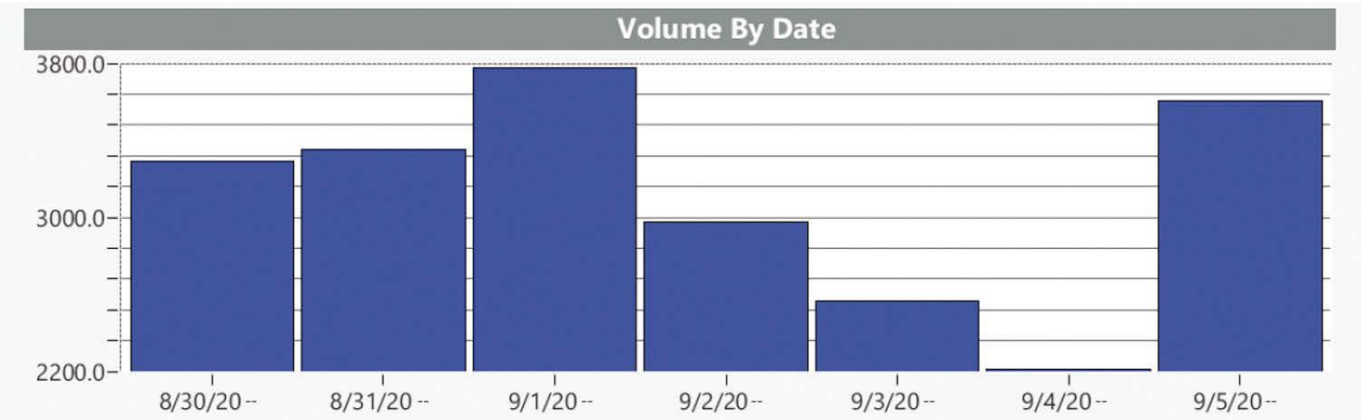
Time View: By Date (Total Volumes)

Site: Beside Mt Nittany United Methodist Church, NB

Time of Day: 0:00 to 23:59

Dates: 8/30/20-- to 9/5/20--

Date	0:00	1:00	2:00	3:00	4:00	5:00	6:00	7:00	8:00	9:00	10:00	11:00	12:00	13:00	14:00	15:00	16:00	17:00	18:00	19:00	20:00	21:00	22:00	23:00	Total Num Vehicles
8/30/20--	9	6	4	4	16	17	59	159	171	158	184	196	279	214	258	297	333	312	193	168	109	81	41	24	3292
8/31/20--	5	2	13	2	9	27	65	154	175	177	195	207	235	259	268	291	329	318	183	158	139	66	51	22	3350
9/1/20--	8	13	4	7	11	26	55	174	205	232	263	239	287	232	297	336	335	307	216	170	135	84	85	53	3774
9/2/20--	29	7	20	5	12	12	36	74	149	223	227	214	187	174	201	245	280	260	163	146	123	67	75	49	2978
9/3/20--	35	6	13	7	4	14	13	47	80	119	194	242	267	239	223	205	203	166	111	98	115	70	56	40	2567
9/4/20--	14	6	3	7	11	8	17	33	59	109	155	175	175	204	193	222	156	190	138	145	100	41	25	21	2207
9/5/20--	14	4	2	6	10	21	78	163	226	225	279	269	264	268	239	294	307	312	193	183	119	82	26	23	3607
Total #	114	44	59	38	73	125	323	804	106	124	1497	1542	1694	1590	1679	1890	1943	1865	1197	1068	840	491	359	232	21775



# All Your Traffic Safety Program Data In One Place

TraffiCloud is our secure, web-based ecosystem for managing all your traffic safety data and equipment.

View dashboards and reports of all collected data. Make more insightful decisions based on data analytics from all your program components. Save time by managing the status of connected devices and dynamic messaging all from one central location. TraffiCloud functionality includes:



## PREMIERCARE

Get a perpetual warranty and remote diagnostics for the duration of your subscription.

- 50% discount on accidental damage
- Real-time remote diagnostic monitoring



## IMAGE MANAGEMENT

Achieve greater awareness with alarms or by requesting generated images.

- Capture images based on speeds, tampering, time intervals or upon request\*
- Review, edit, print and act on useful images



## REPORTING

Save time collecting, organizing, compiling and distributing information.

- Automated, daily uploads of new data into a centralized, SAS70-certified environment
- Identify trends to allocate resources and be proactive
- Schedule reports for regular delivery to your inbox



## ENFORCEMENT

Automate the collection of Lidar captures.

- Ensure data accuracy
- Minimize data collection time



## MAPPING

Manage your entire program through an intuitive visual interface.

- Interactive map provides a window to all system information



## EQUIPMENT MANAGEMENT

Stop wasting time driving to equipment to update and monitor it.

- Check status and change settings from any Internet-connected device
- Send single message to multiple signs at once
- Respond immediately to changing situations



## ALERTS

Specify when and whom to notify upon occurrence of certain conditions.

- Receive email or text as events happen
- Be aware of low batteries, high speeds, tampering, congestion and more



\*Images can be used to identify vehicle make and color but are not ALPR quality.

Take a demo of TraffiCloud, our secure, web-based traffic management and reporting solution that manages all your traffic safety devices and data remotely!

Call **866.366.6602** or email [sales@alltrafficsolutions.com](mailto:sales@alltrafficsolutions.com)